



Transportation Commission **AGENDA ITEM REPORT**

To: Transportation Commission
Subject: Discussion for the Trowbridge Road median closings as part of the MDOT US496/I-127 construction project
Meeting: Transportation Commission - 02 Oct 2023
Department: Public Works
Staff Contact: Stephen Clayton, Senior Project Engineer

BACKGROUND INFORMATION:

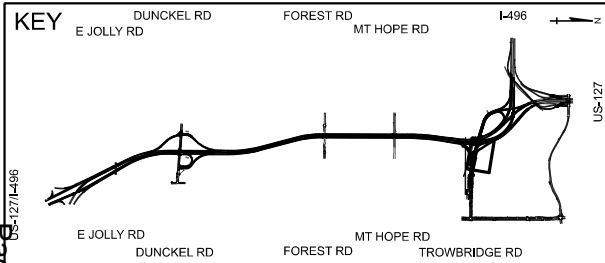
MDOT proposes to eliminate the median crossovers that are on Trowbridge Road at Arbor Dr. and Trowbridge Road at Palmer Ln. The eliminated median crossovers are proposed to be replaced with a new crossover several hundred feet west of Arbor Drive.

There have been several meetings between the Red Cedar neighborhood residents, City staff, City police, and MDOT regarding the proposed design. This discussion item has been prompted by further discussions and by request from the Public Works Director, Scott House. Representatives from MDOT will also be available to answer questions.

ATTACHMENTS:

[210069 Arbor Drive Crossing](#)

RAMP C



CLEARING, FENCE

SECTION 24
T4N, R2W
LANSING TWP

IVANHOE SUBDIVISION

FENCE, REM

REFER TO SIGNING PLANS
FOR TRUSS REMOVAL
DETAILS AND QUANTITIES

CAUTION -
CRITICAL UTILITY

SECTION 23
T4N, R2W
CITY OF EAST LANSING
TROWBRIDGE ROAD
RAMP C NON-LEGAL ALI

Page 2 of 5

RAMP B
RAMP E

CSX RR

RAMP D
TROWBRIDGE RD

GTW RR

CSX RR



HAZARDOUS OR
FLAMMABLE MATERIAL

CAUTION -
CRITICAL UTILITY

HAZARDOUS OR
FLAMMABLE MATERIAL

CAUTION -
CRITICAL UTILITY

CAUTION -
CRITICAL UTILITY

RAMP D

SECTION 23
T4N, R2W
CITY OF EAST LANSING

GTW RR

SECTION 24
T4N, R2W
CITY OF EAST LANSING

RAMP D
QUANTITIES

RAMP A
QUANTITIES

FINAL ROW PLAN REVISIONS SUBMITTAL DATE:

NO.	DATE	AUTH	DESCRIPTION	NO.	DATE	AUTH	DESCRIPTION



FILE: 210069_REM_030.dgn

DATE: 04/10/23

DESIGN UNIT: HARRISON

TSC: LANSING

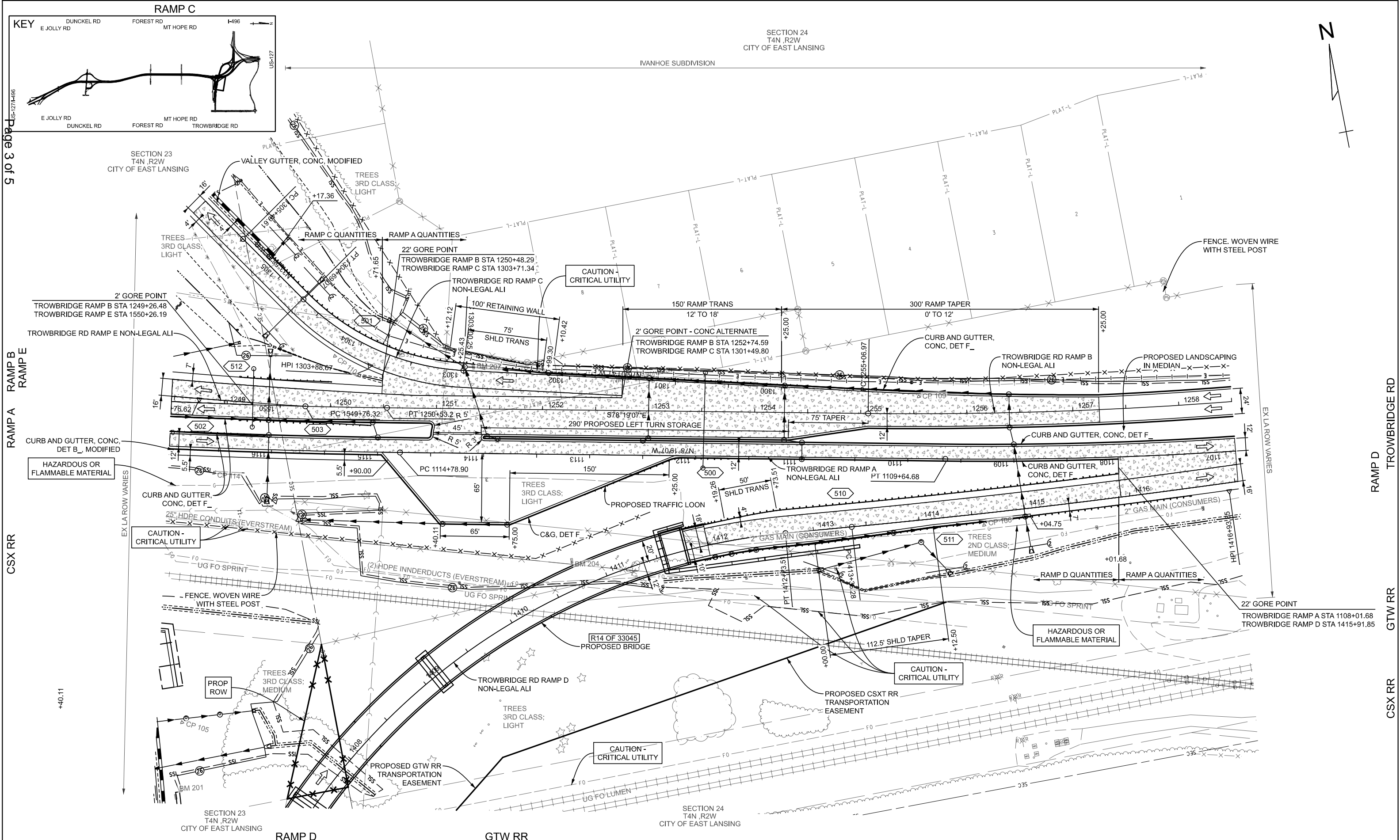
CS: 33045

JN: 210069A

REMOVAL SHEET

I-496 / US-127 INTERCHANGE
TROWBRIDGE RAMPS A, B, C, D & E

DRAWING SHEET
US-127
REM
030
568



Page 3 of 5

RAMP B
RAMP E

RAMP A

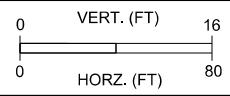
CSX RR

RAMP D
TROWBRIDGE RD

GTW RR

CSX RR

FINAL ROW PLAN REVISIONS		SUBMITTAL DATE:	
NO.	DATE	AUTH	DESCRIPTION



DATE: 04/10/23
 DESIGN UNIT: HARRISON
 TSC: LANSING
 FILE: 210069_CON_030.dgn

CS: 33045
 JN: 210069A

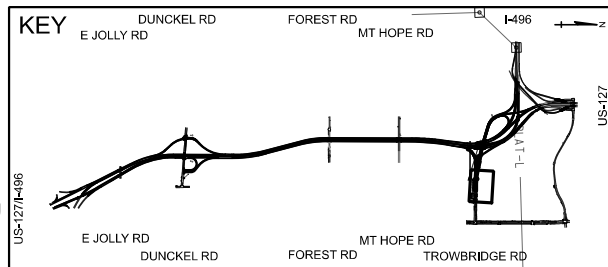
CONSTRUCTION SHEET
 I-496 / US-127 INTERCHANGE
 TROWBRIDGE RAMPS A, B, C, D, & E

DRAWING SHEET
 US-127 CON 030
 SECT 1
569

ARBOR DR

PALMER LN

SECTION 24
T4N ,R2W
LANSING TWP



Page 4 of 5

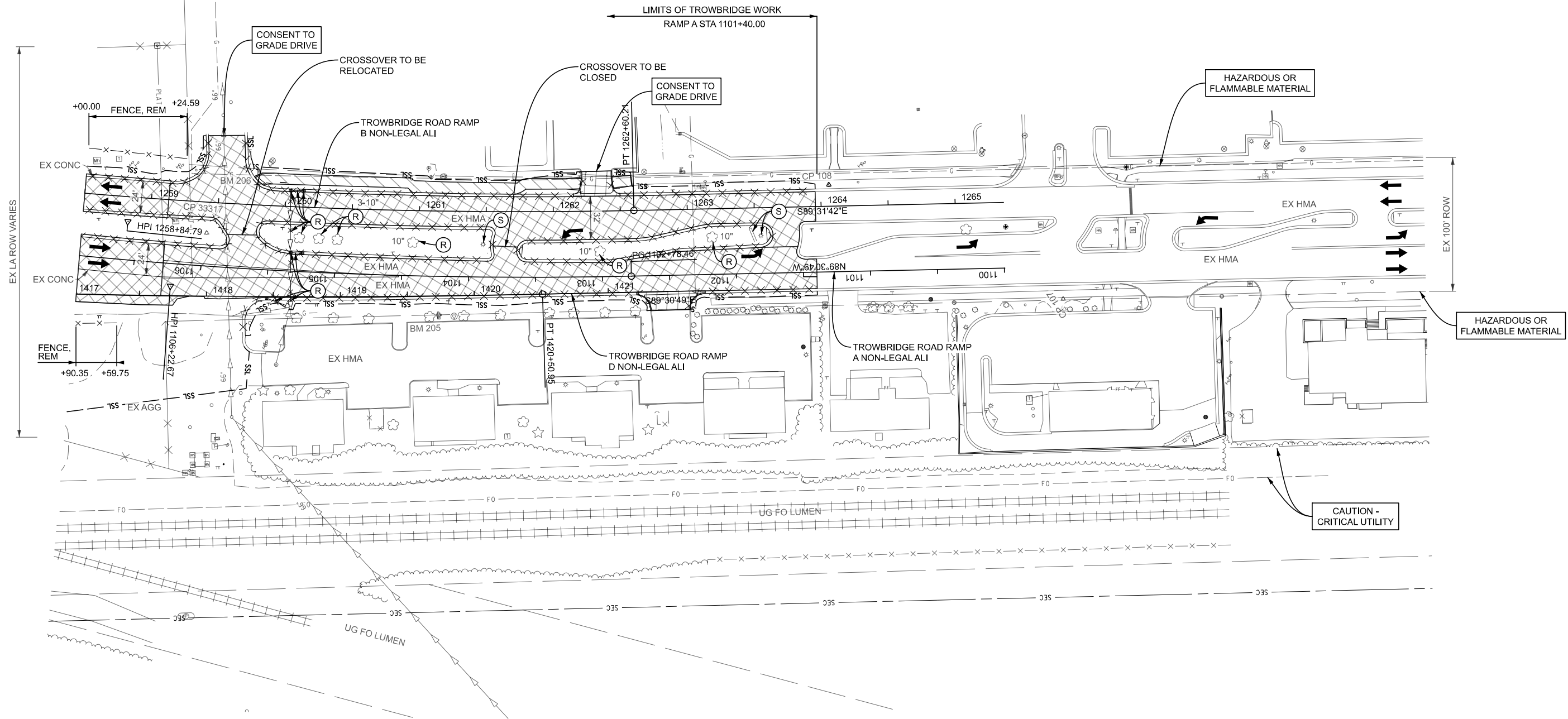
TROWBRIDGE RD
RAMP A

TROWBRIDGE RD
RAMP D

GTW RR
CSX RR

TROWBRIDGE RD

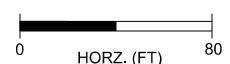
GTW RR



CSX RR

SECTION 24
T4N ,R2W
LANSING TWP

FINAL ROW PLAN REVISIONS		SUBMITTAL DATE:	
NO.	DATE	AUTH	DESCRIPTION

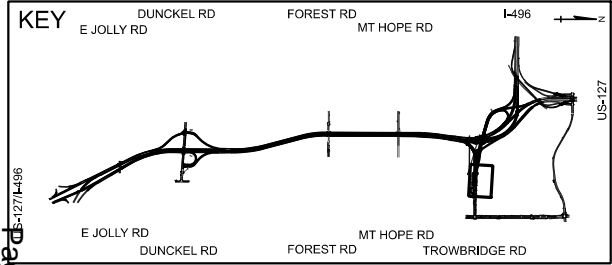
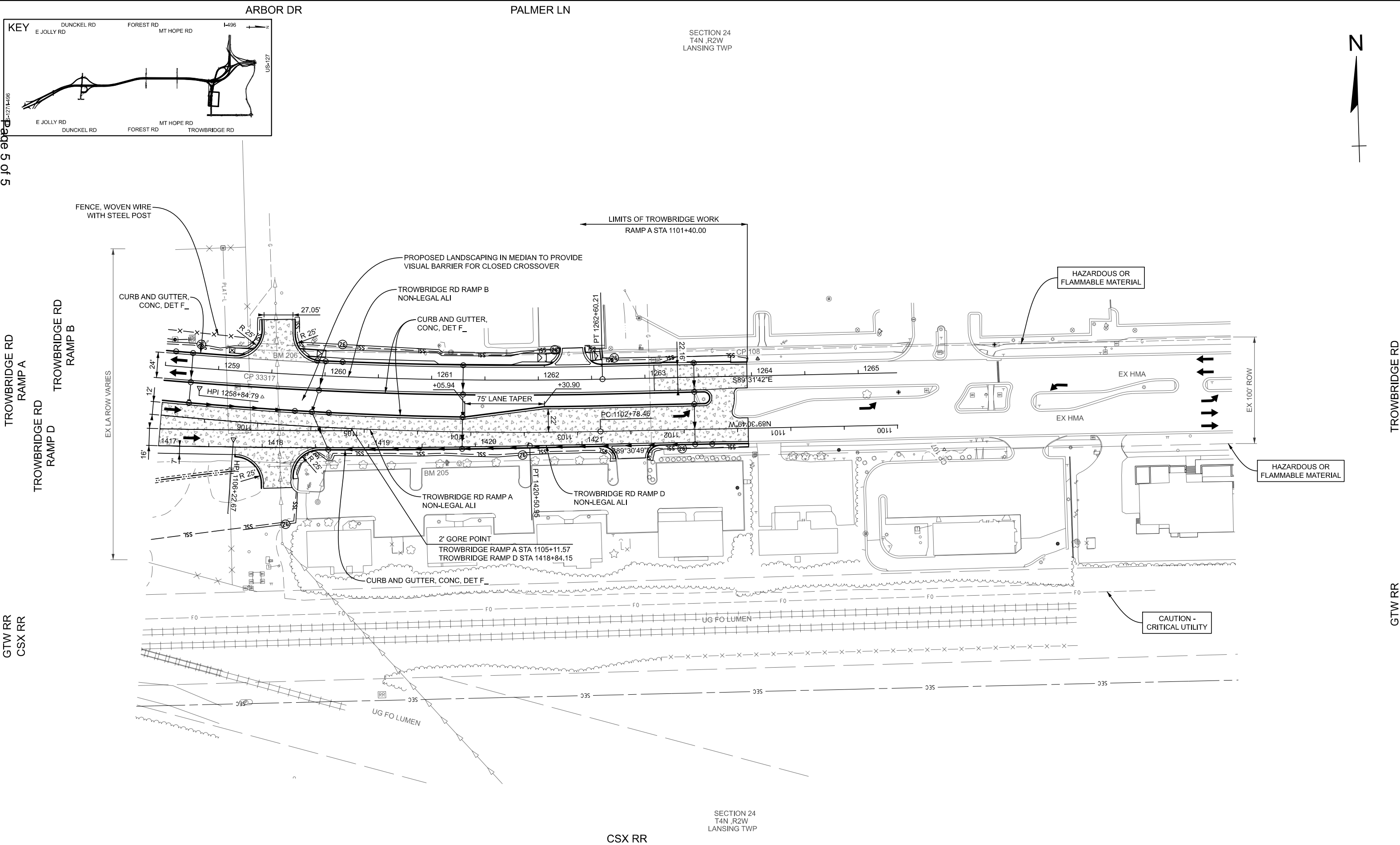


DATE: 04/10/23
DESIGN UNIT: HARRISON
TSC: LANSING

CS: 33045
JN: 210069A

FILE: 210069_REM_031.dgn

REMOVAL SHEET		DRAWING	SHEET
I-96 / US-127 INTERCHANGE		US-127 REM 031	SECT 1 580
TROWBRIDGE RAMPS A, B & D			



SECTION 24
T4N, R2W
LANSING TWP



CSX RR

SECTION 24
T4N, R2W
LANSING TWP

FINAL ROW PLAN REVISIONS		SUBMITTAL DATE:	
NO.	DATE	AUTH	DESCRIPTION



FILE: 210069_CON_031.dgn

DATE: 04/10/23
DESIGN UNIT: HARRISON
TSC: LANSING

CS: 33045
JN: 210069A

CONSTRUCTION SHEET
I-496 / US-127 INTERCHANGE
TROWBRIDGE RAMPS A, B & D

DRAWING SHEET
US-127 CON 031
SECT 1
581